

MINAHOUE

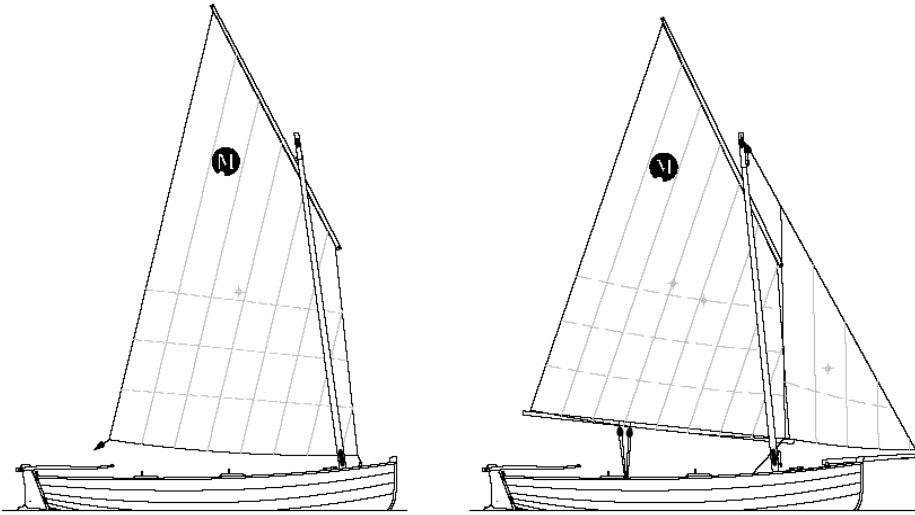
TECHNICAL FILE

FRANÇOIS VIVIER – ARCHITECTE NAVAL

Minahouet, which was first built at the end of 2002, is the synthesis of our previous plans, especially Aber and Ilur. We have tried to make a sail-oar boat as balanced as possible: enough carrying capacity for sailing with family, lightweight and medium width for the pleasure of rowing. New arrangements improve the comfort of utilisation: lowered centreboard box which facilitates movements of crew, placement of oars under the benches, tool boxes. Two rigging versions have been anticipated: the classical fore-sail and the lug sail sloop (picture). In the latter case, it is possible to advance the mast and navigate without jib sail, which is an ideal rig for solitary navigation.

L.O.A.	4,66 m
L.W.L.	4,37 m
BEAM	1,56 m
WEIGHT	170-220 kg
SAIL AREA	10,6-12,5m2
CAPACITY	5 PERSONS
BUILDING	Clinker Plank with MP
CATEGORY	C

Minahouet was designed to be accessible for a greater number of builders through a kit based on plywood cut on digital CNC machines. Dovetailing templates allow you to build a frame with high precision from the first day. Nearly all plywood parts, including clincher-built board (9mm Plywood), are delivered at the exact dimensions and require no adjustment: farewell to doubts and question about drawings and right-angled joints.



François VIVIER- Architect Naval SARL

<http://francois.vivier.info/>

Türkiye yetkili temsilcisi ve uygulayıcısı

Phone & Fax :0216-474 68 08
GSM :0532 -235 49 90

info@classicboats-turkiye.com

www.classicboats-turkiye.com

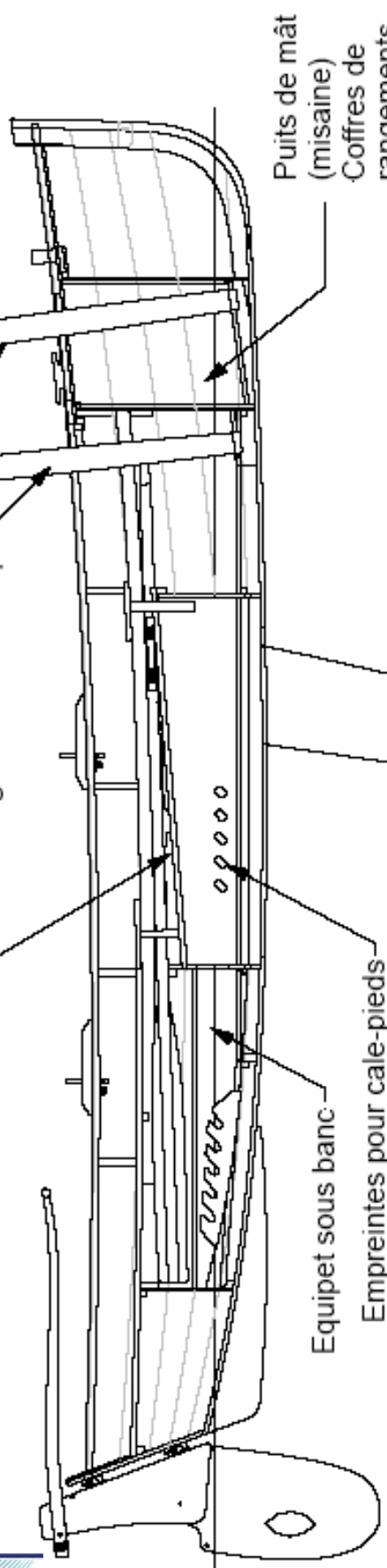


ClassicBoats
TURKI Fyits

Fyits de dérive surbaissé

Mât gréement de misainier

Mât gréement de sloop



Puits de mât (misaine)
Coffres de rangement en abord

Equipet sous banc
Empreintes pour cale-pieds

Dérive pivotante CP 18 mm

Flottabilité 110 litres

Flottabilité 2 X 60 litres

Rangement des avirons sous bancs

Flottabilité 80 litres

Coffre de rangement

Membrures

Equipet sous banc

